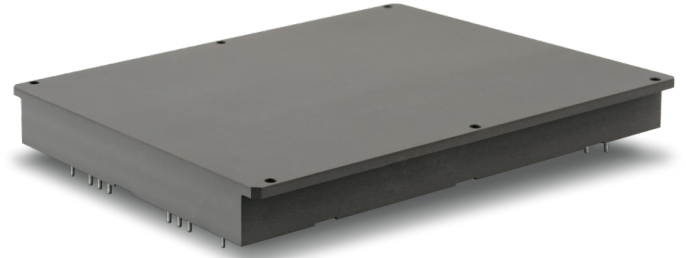


DATASHEET

VDV (HV) Series

VDV(HV)1000

High voltage input DC/DC converters



Description

Compact isolated DC/DC converters of VDV(HV) Series for industrial and special purpose applications. Despite the small size (168×122×16 mm) the maximum output power of modules reach up 1000 W and they are able to operate in a wide case operating temperature range (–60...+125°C). These modules have functions of remote on/off, remote feedback, short circuit, overcurrent and thermal protection and can operate in parallel mode. Without optocouplers in the converter's circuit it can safely operate in conditions of ionizing radiation and high temperature. Units have variable protections from different factors: vibration, dirt, moisture fog and salt fog. These modules undergo special thermal and limit test including burn-in test with extreme on/off modes.

Engineered in accordance with

- MIL-STD-810G
- MIL-STD-461F (CE102)
- MIL-STD-704F



Description of VDV(HV) Series on the manufacturer's website
<https://voltbricks.com/product/vdvh>

Features

- 5 year warranty
- Output current up to 40 A
- 270 VDC (index "M") input compliant with MIL-STD-704F
- Low-profile design (16 mm) with cylindrical pin outs
- Case operating temperature –60...+125°C
- 125 °C baseplate operation without derating
- Magnetic feedback without optocouplers
- Short circuit protection, overvoltage, thermal protection
- Remote on/off
- Output voltage adjustment
- Typical efficiency 89% (Uout.=24 VDC)
- Parallel operation, remote feedback
- Parallel or series mode
- Power good signal
- Polymer potting sealing

Order registration

+65 6950 0011, Global Operations Team

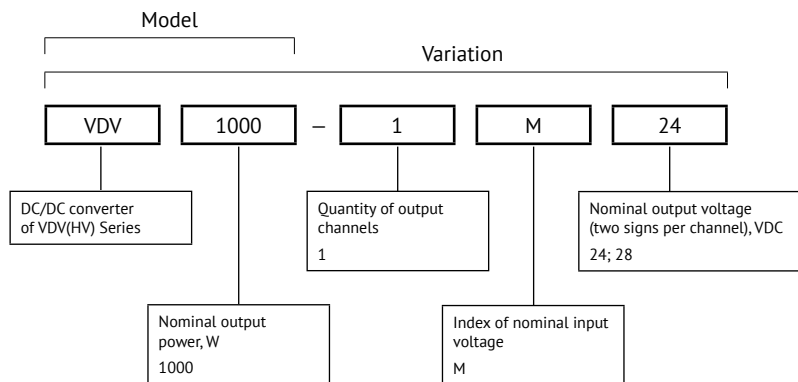
Technical support

support@voltbricks.com

Reliability test

https://support.voltbricks.com/Reliability-Test_ENG.pdf

Ordering information



For more information please contact
our Global Operations Team

+65 6950 0011

info@voltbricks.com

Output power and current

Model	VDV1000	
Output power, W	960	1000
Output voltage, VDC	24	28
Max. output current, A	40	35,7

Index of nominal input voltage*

Parameter	Index "M"
Nominal input voltage, VDC	230
Input voltage range, VDC	175...350
Transient deviation (1 s), VDC	175...400
Typical efficiency for Uout.=24 VDC	89%

* Reflected input ripple current (10–10000 Hz) – 8% Uin. nom

Specifications

All specifications valid for normal climatic conditions (ambient temp. 15...35°C; relative humidity 45...80%; air pressure 8,6×10⁴...10,6×10⁴ Pa), U_{in}. nom, I_{out}. nom, unless otherwise stated. It is important to note that the information herein is not full.

Output specifications

Parameter		Value
Output voltage adjustment		±5% U _{out} . nom
Regulation	Input voltage variation (U _{min} ...U _{max})	max ±2% U _{out} . nom
	Load variation (10...100% I _{max})	
	Total regulation	±6% U _{out} . nom
Ripple and noise (p-p)		<2% U _{out} . nom
Maximum capacitive load	24 VDC	250 µF
	28 VDC	100 µF
Start up time (remote)		max 0,1 s
Overload protection level*		<1,8 P _{max}
Short circuit protection*		hiccup auto recovery
Overvoltage protection		1,5 U _{nom}

* Parameters are stated for the information purposes and could not be used at long term work, exceeding maximum output current, at work outside of a range of operating temperatures.

General specifications

Parameter		Value
Case temperature	Operating	−60...+125°C
	Storage	−60...+125°C
Switching frequency		250 kHz ±10%
Isolation capacitance	input/output	1500 pF
Isolation voltage (60 s)	input/output input/case output/case	1500 VAC, 50 Hz 1500 VAC, 50 Hz 500 VAC, 50 Hz
Isolation resistance @ 500 VDC	input/output	20 MOhm min, normal climatic conditions
Thermal impedance		2,7°C/W
Thermal protection level		118...125°C, clamp, auto recovery
Remote on/off		Off.: connection of pins "ON" and "−IN", I _{sc} 5 mA
Vibration and dust proof, salt fog resistant		+
Moisture proof (T _{amb} =25°C)		98%
Typical MTBF		1 737 900 hrs
Failure rate		<0,05%
Warranty		5 years

Specifications (cont.)

Physical specifications

Parameter	Value
Case material	aluminium
Potting	epoxy polimer
Pin material	phosphor bronze, SnPb plated
Weight	max 690 g
Soldering temperature	260°C @ 5 s

Design topology

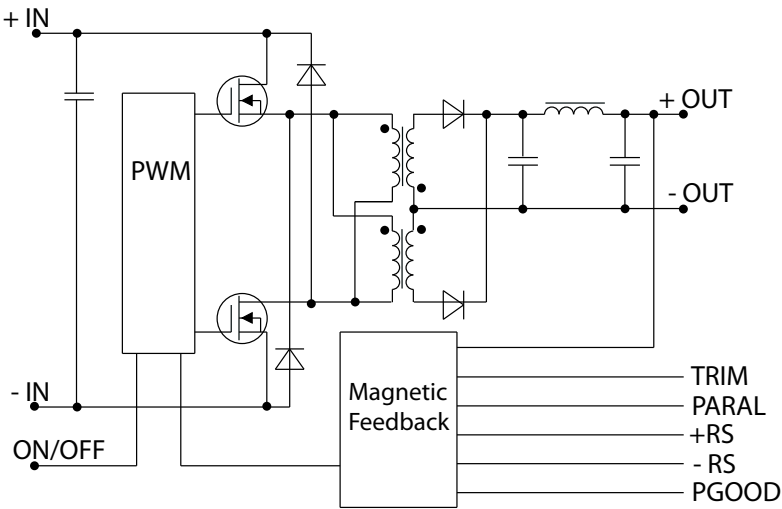


Figure 1. Design topology.

Service functions

Typical connection

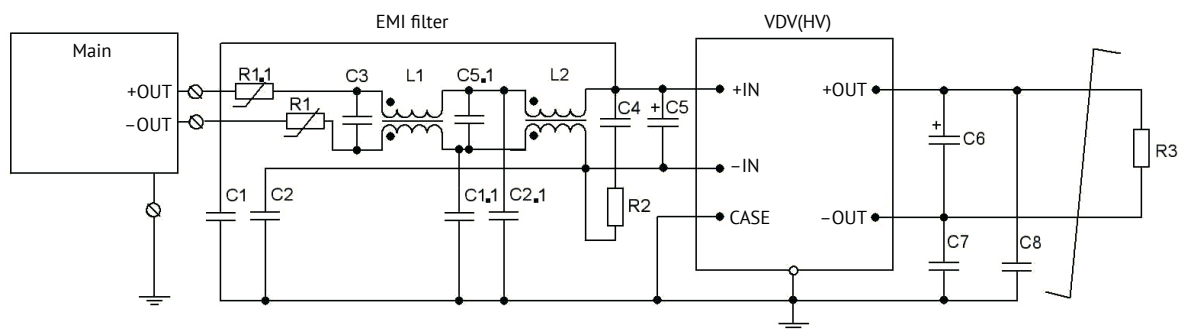


Figure 2. Typical connection with filtration unit.

R2	resistor	1 Ohm	
R1, R1.1	NTC-thermistor	4,7 Ohm	
C1, C2	ceramic capacitor	4700 pF 500 VDC min	
C1.1, C2.1	tantalum capacitor	0...2200 pF	
C7, C8	tantalum capacitor	2200...4700 pF	
C4	film capacitor	Input voltage	0,01...0,15 uF
C5	film capacitor*	1...2,2 uF	
	electrolytic capacitor	Input voltage	110 VDC 230 VDC 470...820... uF 100...220 uF
C6	tantalum capacitor	Output voltage	22...100 uF
L1	common mode choke	0,4...2 mH	
L2	common mode choke	5...20 mH	
C3 C5.1	film capacitor	Input voltage	110 VDC 230 VDC 1...2,2 uF

* C4 is recommended to be installed in addition to C5 (electrolytic).

Service functions (cont.)

Remote control

Function of remote control by a signal allows to control the unit's operation using mechanical relay or electric switch of "open collector" type.

The unit should be powered off by connecting "ON" output to "-IN" output. The switch can carry current of up to 5 mA, the max voltage drop on the switch should be less than 1,1 V.

The unit is powered on by disconnecting the switch within the time less then 5 μ s. Being disconnected the switch is applied by approximately 5 V, allowable current leakage through the switch should not be over 50 μ A.

To arrange remote power off/on of several units simultaneously it is not allowed to use additional elements in the circuit to connect outputs "ON" and "-IN" and a switch.

If the function of remote power off/on is not used, "ON" output is allowed to be left unconnected.

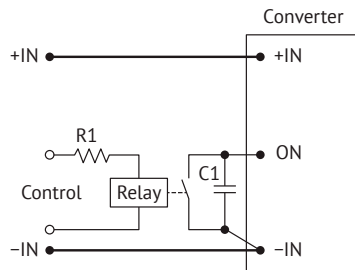


Figure 3 (a). ON/OFF control by relay.

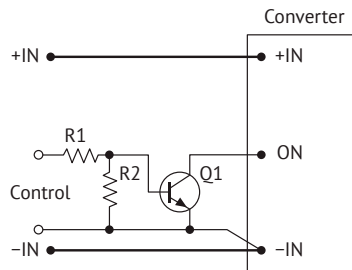


Figure 3 (b). ON/OFF control by bipolar transistor.

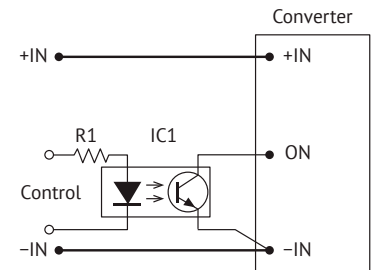


Figure 3 (c). ON/OFF control by optocoupler.

Adjustment

Adjustment of output voltage of a power supply unit within the range of at least $\pm 5\%$ can be done by connecting "ADJ" output (if available) through "-OUT" output to increase output voltage, or through "+OUT" output to decrease the output voltage.

In case of using variable resistor Rvar and outside resistors (R1, R2) it is possible to fulfill the adjustment both to increase and decrease the output voltage.

If you need to control the output voltage of a power supply unit by a signal from external source of current or voltage, e.g. in micro-controller automated control systems using DAC, the external current or voltage signal should be supplied to the adjustment output relating to "-OUT" output, as shown in the drawings (e) and (d).

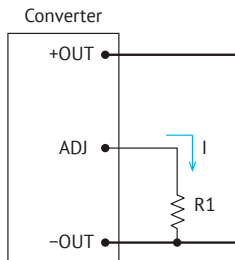


Figure 4 (a). Output voltage increase.

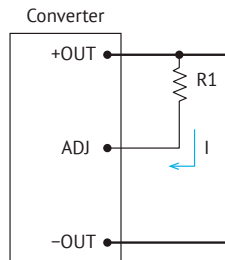


Figure 4 (b). Output voltage decrease.

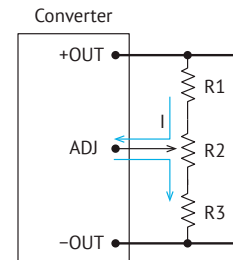


Figure 4 (c). Adjustment by resistive divider.

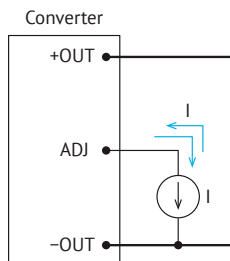


Figure 4 (d). Adjustment by current source.

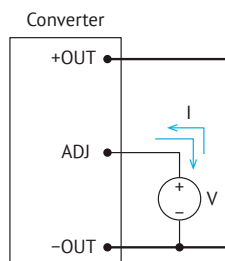


Figure 4 (e). Adjustment by voltage source.

Service functions (cont.)

External feedback

Application of external feedback allows to compensate for output voltage drop on extended power lines and isolating diodes. The maximum value of compensation for output voltage drop is no less than 5%. If it's necessary to provide better A/I, "+RS" and "-RS" pins should be connected to the load with twisted-pair wire which has cross-section area no less than 0,1 mm².

Typical connection diagram of external feedback application for power supply system with extended power lines is shown in picture:

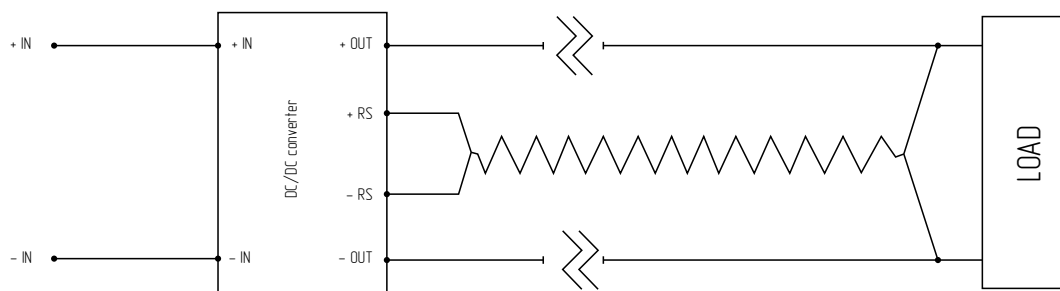


Figure 5. Typical connection diagram of external feedback application.

If there no need to apply external feedback, "+RS" and "-RS" pins should be connected with "+IN" and "-IN" directly according to the picture. It is strictly forbidden to leave "+RS" and "-RS" pins disconnected.

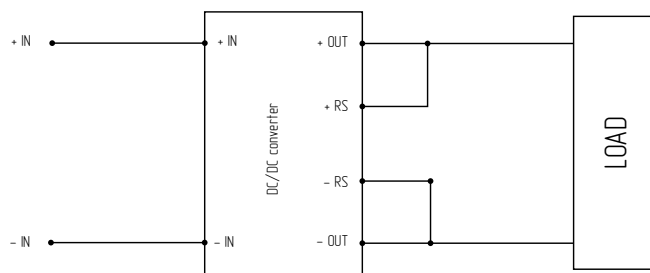


Figure 6. Typical connection diagram without external feedback application.

Efficiency

VS load

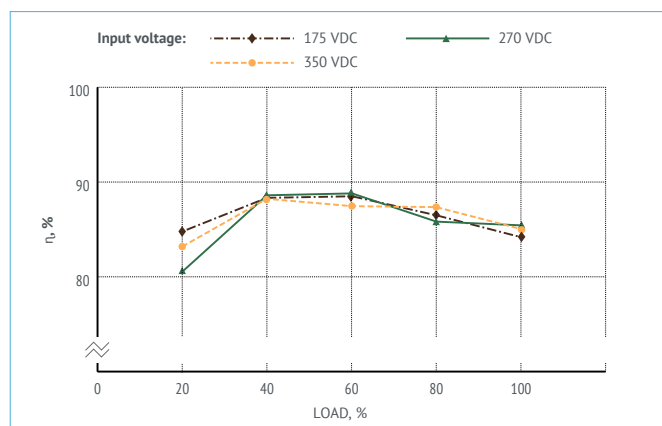


Figure 7. Efficiency of VDV(HV)1000-1M28.

Oscillograph charts

Testing conditions $U_{in}=270$ VDC, $I_{out}=37$ A, $T_{amb}=25^{\circ}\text{C}$, $U_{out}=27$ VDC, $C_{out}=100$ μF

The database of regulated parameters of the manufactured products is available. Pls. contact your personal manager or customer support service to get necessary information.

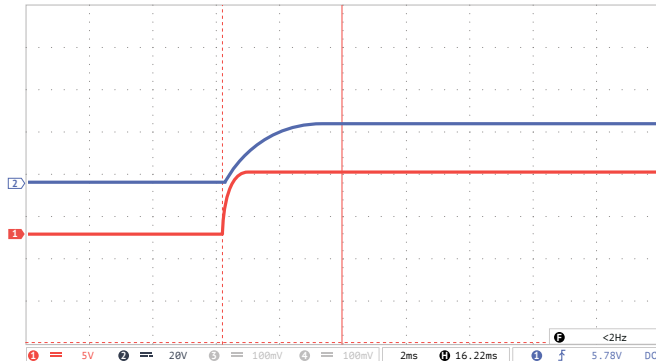


Figure 8 (a). Oscillograph chart of setting output voltage after supplying remote control signal to ON-output.

Ray 1 (red) – output voltage. Scale 5 V/div.

Ray 2 (blue) – voltage at ON-output. Scale 20 V/div.

Time scale $t=2$ ms/div.

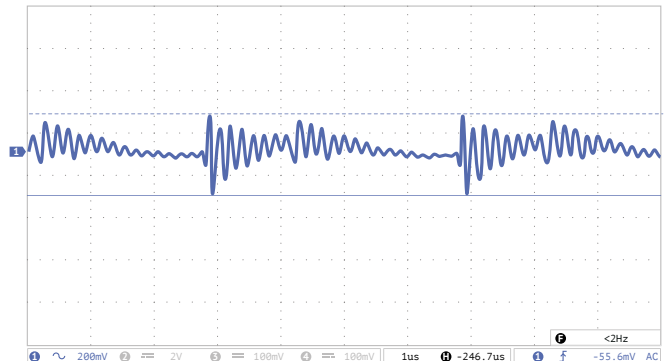


Figure 8 (b). Oscilloscope chart of output voltage ripple.

Ray 1 (blue) – ripple of output voltage. Scale 200 mV/div.

Time scale 1 us/div.

Measuring technique: see Electrical Test Screen.

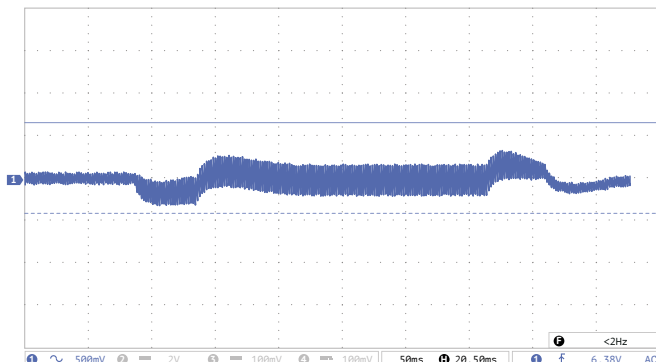


Figure 8 (c). Oscilloscope chart of voltage transient deviation during load “drop/rise”.

Ray 1 (blue) – output voltage. Scale 500 mV/div.

Time scale $t=50$ ms/div.

Modes:

- “drop” output current variation (10...100%) I_{nom} ;
- “rise” output current variation (10...100%) I_{nom} ;
- build-up time 500 us.

Noise spectrogram

Testing according to MIL-STD-461F CE102. (Tcase=25°C, Vin.=+12 V, full load, unless otherwise specified)

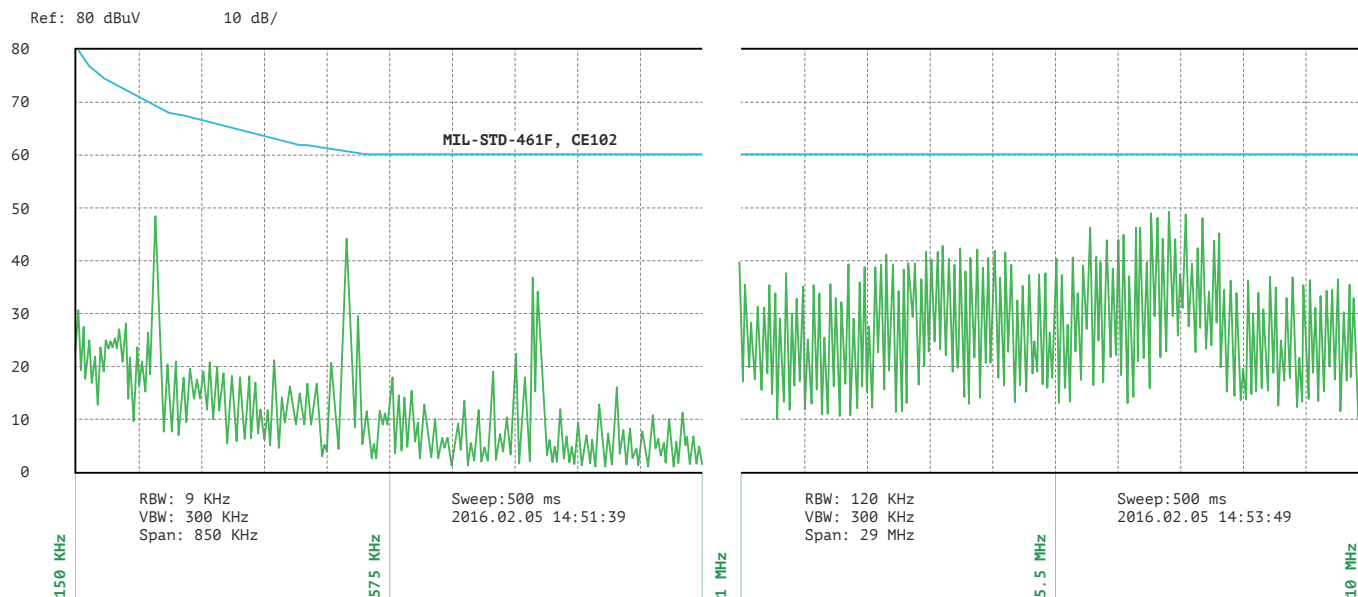


Figure 9. Spectrogram of VDV(HV)1000-1M28 with typical connection diagram.

Outline dimensions

Models packed in reinforced case with flanges

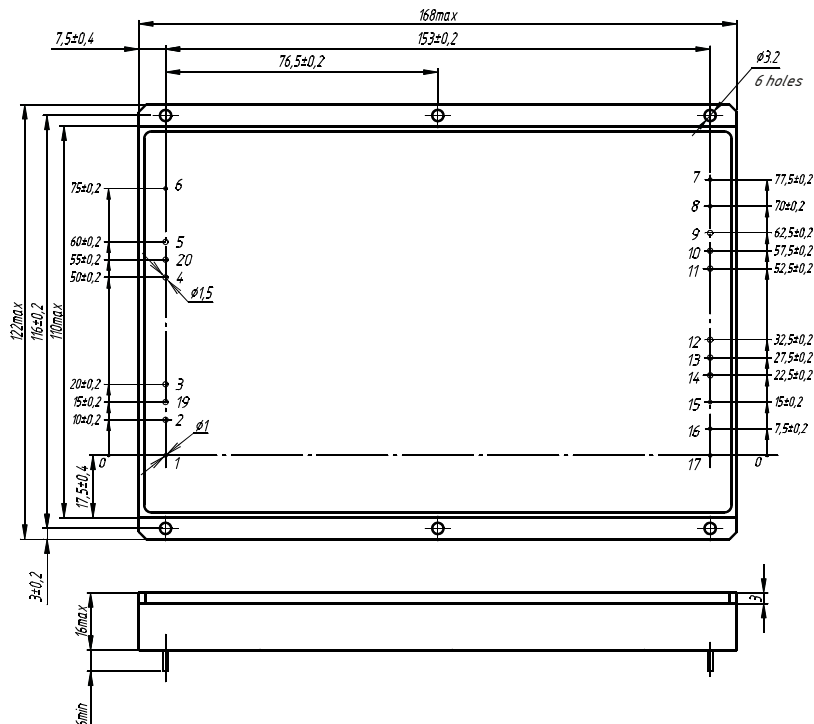


Figure 10. Single-output models.

Pin out

Pin #	1	2, 3, 19	4, 5, 20	6	7	8	9, 10, 11	12, 13, 14	15	16	17
Function	ON	–IN	+IN	CASE	PGOOD	+RS	+OUT	–OUT	–RS	TRIM	PARAL

Heatsink

Part number	Ribs configuration	Dimensions A×B×H×D, mm	Area, cm²	Weight, g
752695.009	Longitudinal	168×125×46×6	1890	1200

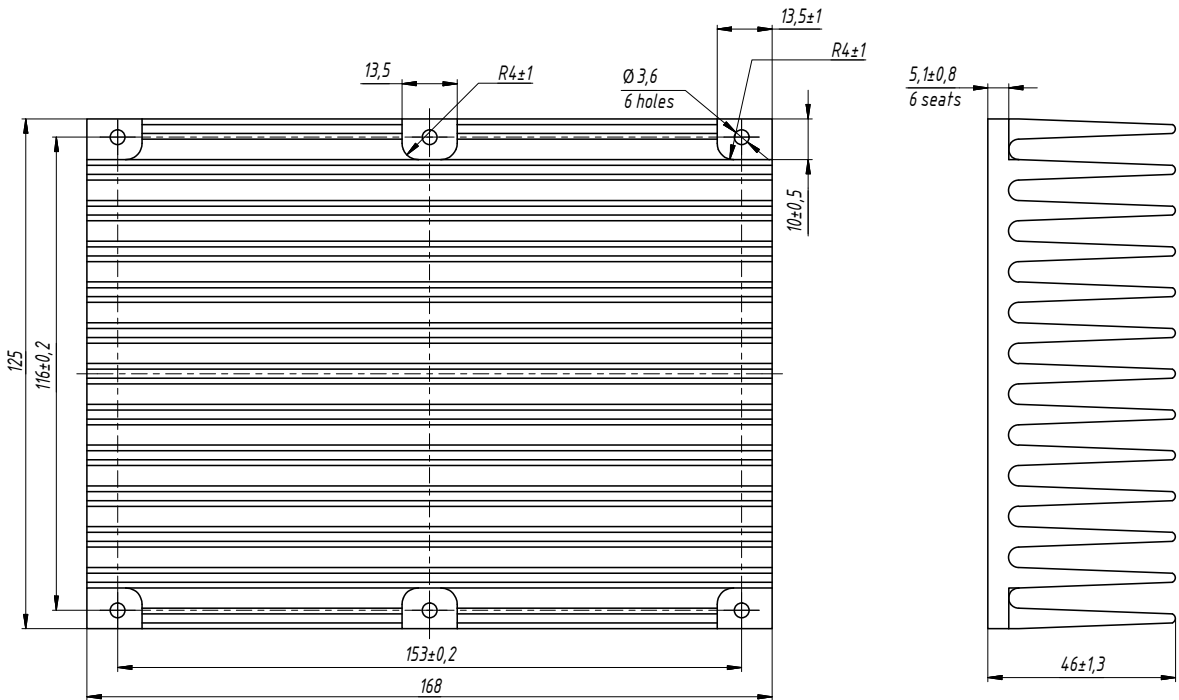


Figure 11. 752695.009.

voltbricks

www.voltbricks.com info@voltbricks.com

VOLTBRICKS PTE. LTD.

105 Cecil street

#15-01 The OCTAGONE

Singapore 069534

+65 6950 0011

Manufacturer of reliable DC/DC converters and power
supply systems

This datasheet is valid for the following units: VDV1000-1M24; VDV1000-1M28.